

EIS components

Shore Gold Inc.
Exploring and Developing
Canada's Diamond Resources

October 26, 2010

Components

- Archeology
- Air and Noise
- Soils and Terrain
- Vegetation
- Wildlife
- Biodiversity
- Traditional and Non-traditional Land Use
- Socio-economics
- Human Health


Archeology

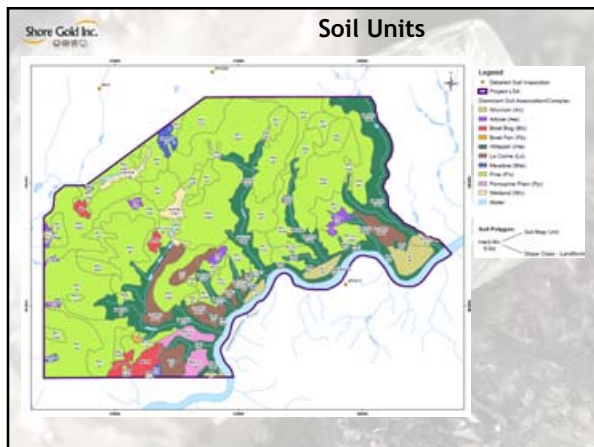
- HRIA complete
- Phased mitigation
- 22 sites- moderate or high potential

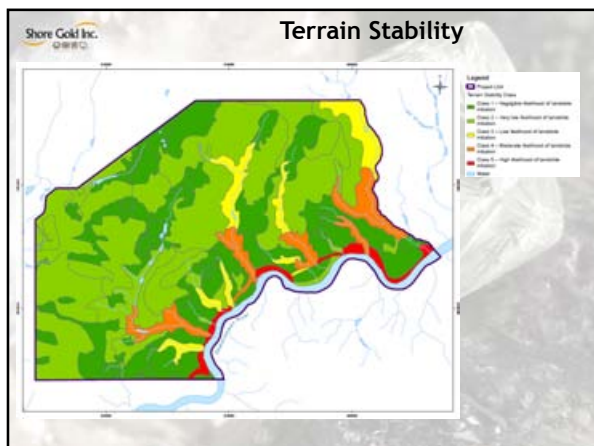



Shore Gold Inc. **Air and Noise**

- Good air quality
- Noise survey- area is quiet
- Modeling underway
 - Blasting during days only
 - Maximize use of electric power



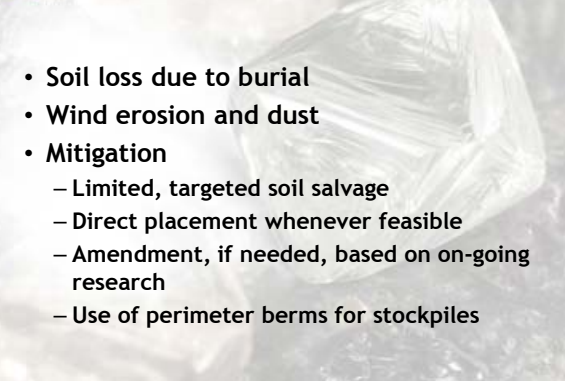





Shore Gold Inc. 

Soil and Terrain Effects


- Soil loss due to burial
- Wind erosion and dust
- Mitigation
 - Limited, targeted soil salvage
 - Direct placement whenever feasible
 - Amendment, if needed, based on on-going research
 - Use of perimeter berms for stockpiles




Shore Gold Inc. 

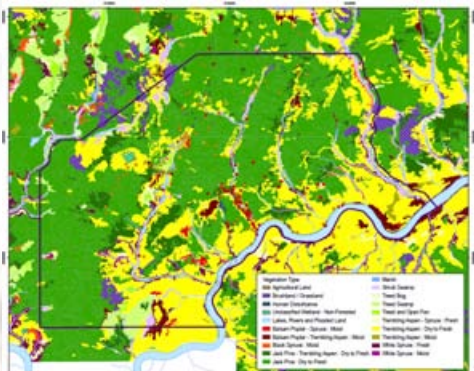
Vegetation

- Valued Ecosystem components:
 - Old growth forest
 - Rare and endangered plants
 - Riparian communities
 - Ravine and river valley vegetation



Shore Gold Inc. 

Vegetation





Shore Gold Inc. **Vegetation**

- Jack pine and Aspen upland- 76% of LSA, 60% of FaC forest
- Old growth forest (>120 years) limited in LSA (0.2%)




Shore Gold Inc. **Vegetation**

- 42 rare plant species recorded in surveys



Shore Gold Inc. **Vegetation Effects**

- Loss of vegetation communities
- Impacts to individual rare plants
- Changes in moisture regime
- Mitigation
 - Reclamation and revegetation



Shore Gold Inc. **Wildlife**

- Aerial surveys
- Ground surveys




Shore Gold Inc. **Wildlife**

- Valued ecosystem components
 - Elk
 - Moose
 - Deer
 - Rare and endangered species (birds)
 - Common nighthawk, chimney swift, Canada warbler, olive-sided flycatcher, whip-poor-will
 - Water fowl


Shore Gold Inc. **Wildlife**

- Direct loss of habitat
 - 2.7% loss of primary elk habitat
 - 2.4% loss of primary moose habitat
 - 1.8% loss of average and above average white-tailed deer habitat




Shore Gold Inc.
Wildlife

- Indirect effects
 - 4.7% of primary elk habitat affected
 - 4.1% of primary moose habitat affected
 - 3% of average and above average white-tailed deer habitat affected



Shore Gold Inc.
Wildlife

- No expected negative impact to water fowl
- No negative effect expected on rare or endangered species



Shore Gold Inc.
Biodiversity

- landscape, community and species level
- Integrates soil, vegetation, wildlife, hydrology and aquatic ecology



Shore Gold Inc. 2010

Traditional Land Use

- Important aspect of EIS
- Supporting studies with five groups
 - Harvesting of plants and medicines
 - Consumption of country food
 - Hunting trapping fishing
 - Sacred sites,
 - Cabins and trails,
- Summary included in EIS

Shore Gold Inc. 2010

Socio-Economic



Shore Gold Inc. 2010


Socio-Economic

- 706 direct and indirect jobs in the region (operation)
- \$96 million in additional household income in the province.
- project operation would contribute approximately 0.4% of provincial GDP (Saskatchewan GDP was \$36.9 billion in 2009)

Shore Gold Inc. **Socio-Economic**

Potential effects

- \$66 million/year in provincial tax revenues
- \$6 million/year to local governments



Shore Gold Inc. **Socio-Economics**



- Additional 176 workers and their families moving to the region
- Increased traffic on local roads
- Increased pressure on local and regional housing

Shore Gold Inc. **Socio-Economic**

<p>Enhancing positive effects:</p> <ul style="list-style-type: none">• Local hiring and procurement policies• Dialogue with stakeholders to hear interests and ideas (DDAC)• Support of Northern Career Quest, Aboriginal Skills and Employment Program• Participation in the Aboriginal Workplace Partnership Agreement called the Fort à la Corne Diamond Partnership	<p>Mitigating adverse effects:</p> <ul style="list-style-type: none">• On-site construction work camp (reduces roadway and housing supply pressures)• Notification of construction delivery schedules and activities• Regular traffic safety training for workers• Use of rail line for delivering major equipment components• Communication with municipal authorities to assess longer-term housing needs (during operations phase)
---	--



Shore Gold Inc.
GOLD INC.

Human Health

- **Considers occupational and environmental conditions**
- **Direct effects limited:**
 - No additions of toxic material
 - All compounds released naturally occurring
 - In kimberlite
 - In groundwater



Shore Gold Inc.
GOLD INC.

Human Health

- **Potential Effects**
 - Increased traffic on local roads
 - Construction Safety
 - Mining Safety



Shore Gold Inc.
GOLD INC.

Ongoing Work

- **Reclamation and revegetation**
 - U of A greenhouse study
 - Coarse and fine PK, sand, topsoil, compost and municipal biosolids
 - Site revegetation plots
- **Metal Leaching and ABA**
 - Kinetic testing of fine and coarse PK continues
 - On site ABA test pads
- **Hydrogeology**
 - Research agreement with U of S
 - Isotope analysis of shales for hydraulic conductivity

